

CAN BUS FUEL LEVEL SENSORS - REMOVAL/INSTALLATION

1. General

A. This section gives the procedure for removal and installation of the Can Bus Fuel Level Sensors.

2. CAN Bus Fuel Level Sensor Removal/Installation

A. Remove the Sensor (Refer to Figure 401).

CAUTION: To prevent component damage, obey all electrostatic discharge (ESD) procedures when you remove and install the electrical system components. Refer to Chapter 20, Electrostatic Discharge - Maintenance Practices.

- (1) Remove external electrical power from the airplane.
- (2) Set the BATTERY switch (SC005) on the circuit breaker switch panel, to the OFF position.
- (3) Defuel the airplane. Refer to Chapter 12, Fuel - Servicing.
- (4) Remove access panels 523BB and 511AB (left wing) or 623BB and 611AB (right wing). Refer to Chapter 6, Access Plates and Panels Identification.
- (5) Disconnect the electrical connector from the fuel level sensor.
- (6) Disconnect the fuel level sensor ground braid.
- (7) Remove the screws that attach the fuel level sensor to the bracket.

CAUTION: Do not bend the tube. A bent tube will give incorrect operation.

- (8) Carefully remove the fuel level sensor from the fuel bay

B. Install the Sensor (Refer to Figure 401).

NOTE: Refer to Fuel Quantity System Calibration (Airplanes with CAN bus type fuel level sensors).

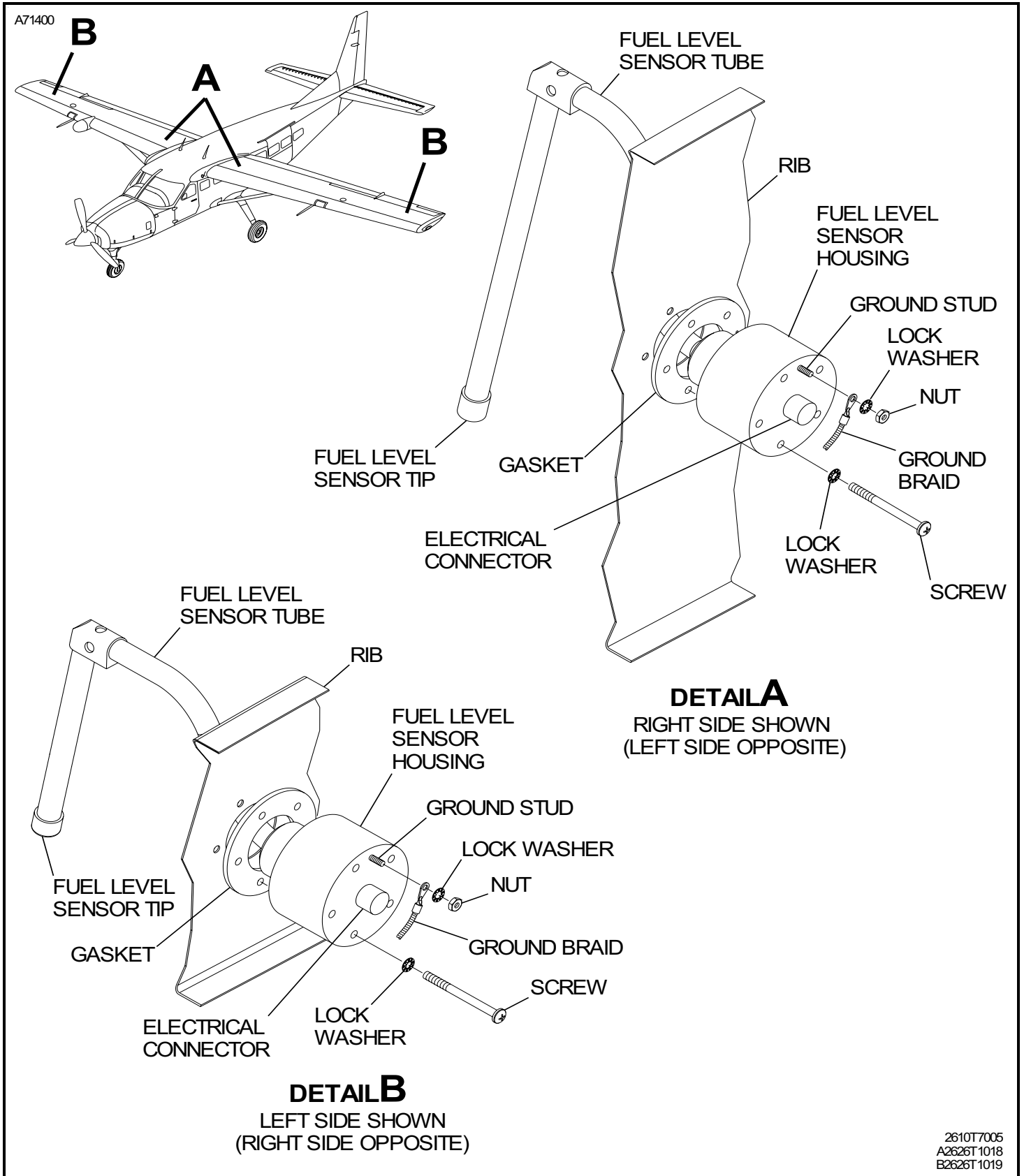
CAUTION: To prevent component damage, obey all electrostatic discharge (ESD) procedures when you remove and install the electrical system components. Refer to Chapter 20, Electrostatic Discharge - Maintenance Practices.

- (1) Install the new gaskets on the fuel level sensor.

CAUTION: Do not bend the tube. A bent tube will give incorrect operation.

- (2) Carefully install the fuel level sensor in the fuel bay.
- (3) Attach the fuel level sensor with screws and torque the screws to 30 inch-pounds.
- (4) Connect the electrical connector to fuel level sensor.
- (5) Connect the fuel level sensor ground braid.
- (6) Install access panels 523BB and 511AB (left wing) or 623BB and 611AB (right wing).
- (7) If the fuel level sensors are replaced, the system must be calibrated. Refer to Fuel Quantity System Calibration (Airplanes with CAN bus type fuel level sensors) Fuel Quantity (CAN Bus) - Adjustment/Test.
- (8) Do a check of the fuel quantity system. Refer to Fuel Quantity (CAN Bus) - Adjustment/Test.

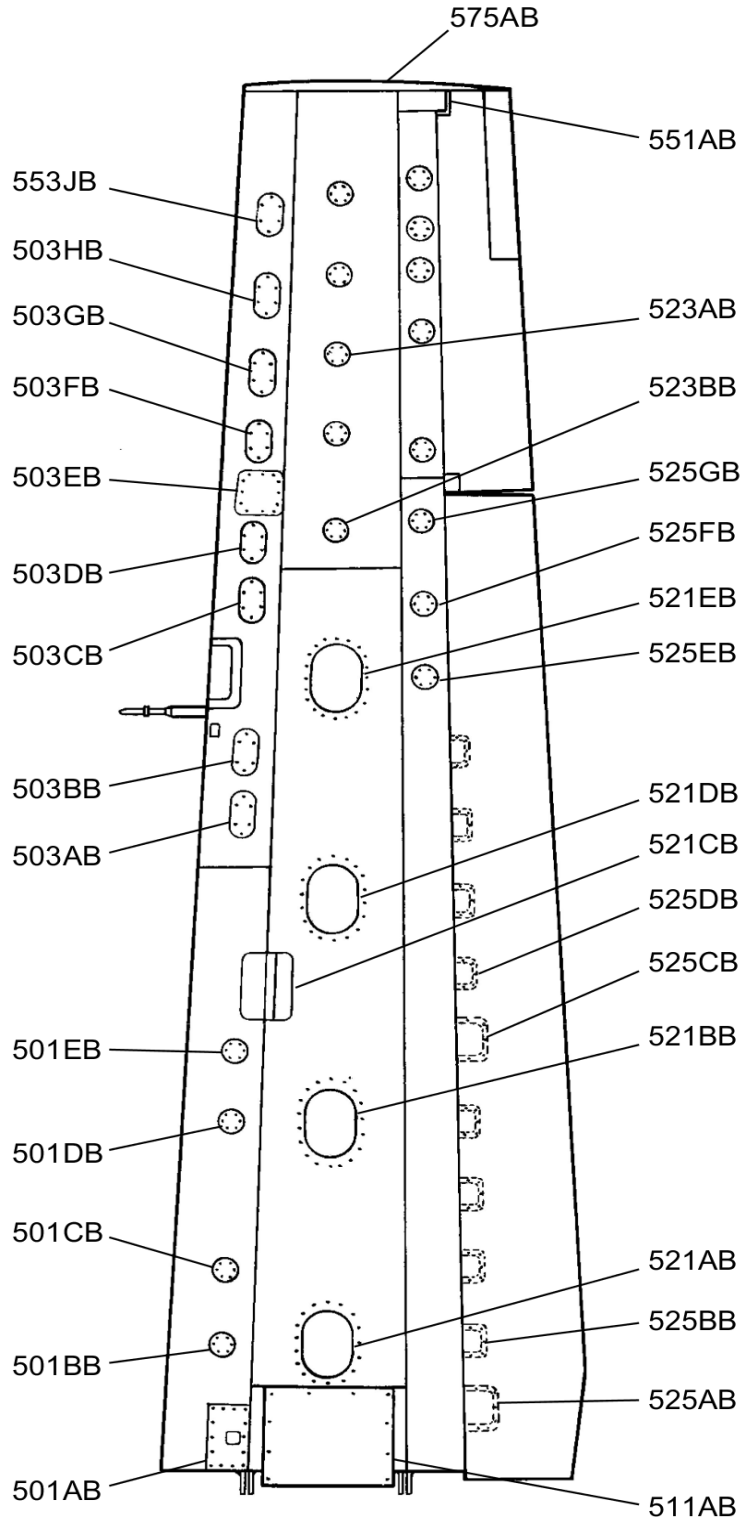
Figure 401 : Sheet 1 : Can Bus Fuel Level Sensor



2610T7005
A2626T1018
B2626T1019

Figure 7 : Sheet 1 : Left Lower Wing Panels

A22961

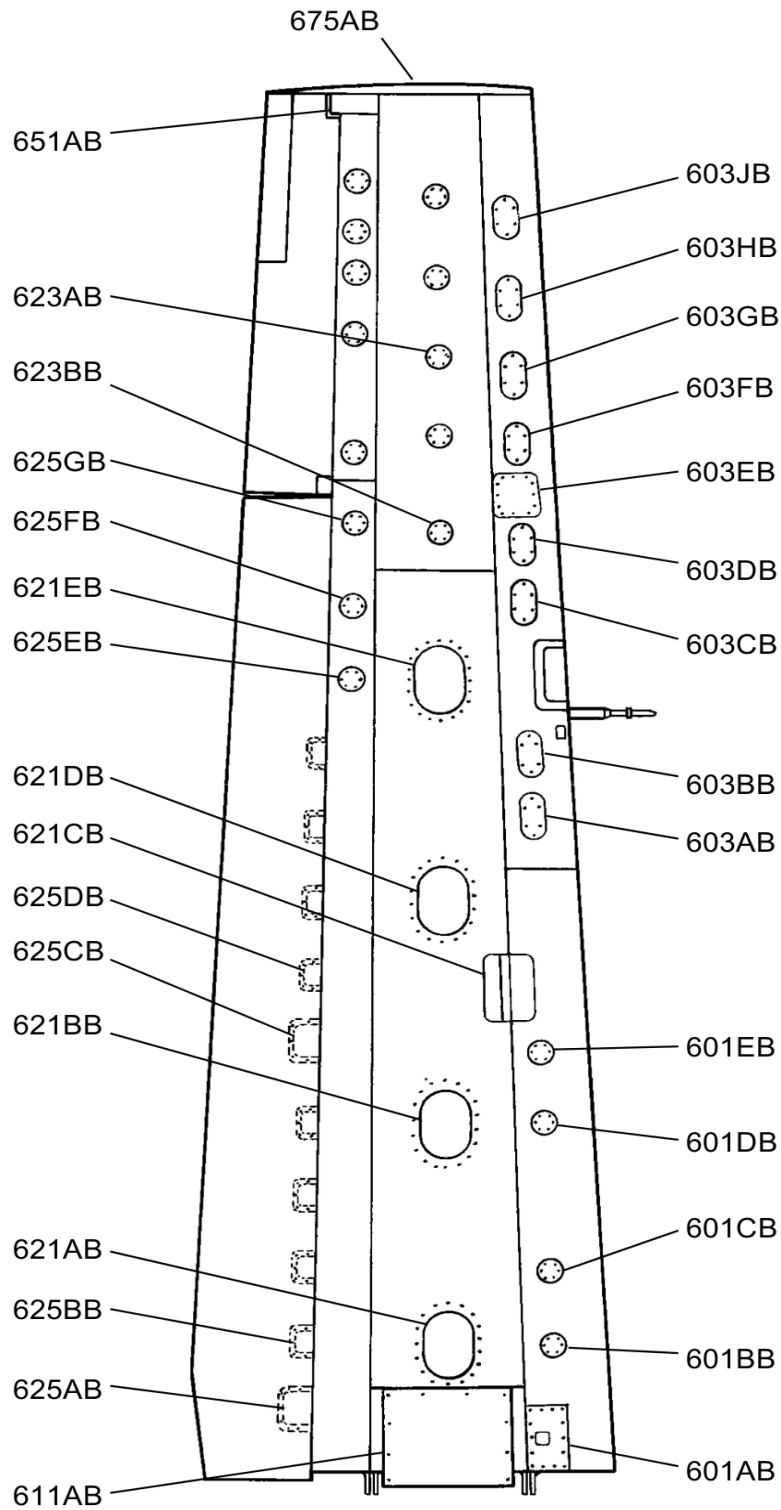


VIEW LOOKING UP AT LEFT WING

2610R2008

Figure 8 : Sheet 1 : Right Lower Wing Panels

A22965



VIEW LOOKING UP AT RIGHT WING

2610T2008